


# Installation 121-1

Please scan the QR code on the right for installation video.



To avoid scratches and swallowing parts, please do not install by children!

Hardware List		Hardware List			
	Seat	1		Backrest 1	1
	Backrest 2	1		Seat cushion	1
	Back cushion	1		Armrest cushion	1
	Sofa cover	1		Legs	4
	Buckle	1		8x20mm screw	2

1

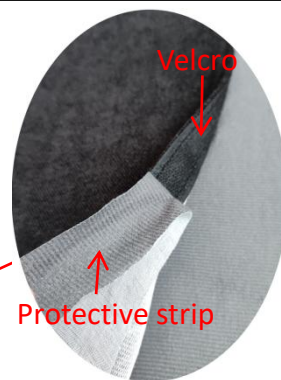




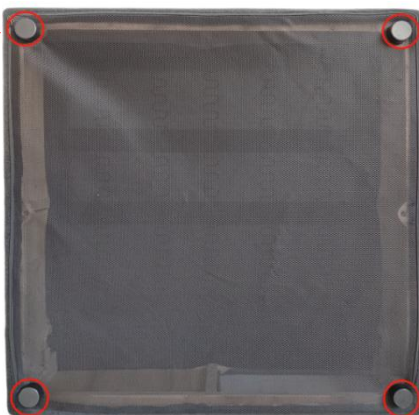
2



- 3 Put on the sofa cover. Be careful to loosen all the zippers first.  
The mesh goes on the bottom of the couch.  
Suggestion: you'd better not remove the protective strip before finish putting the cover on.



- 4
- 
- Secure the legs of the sofa.



- 5
- 
- Three dark grey cushions are shown being placed on the sofa. Red arrows indicate the placement of each cushion: one on the seat, one on the backrest, and one on the side.

Can be used as both sides and corner piece.



- 6 Apply the connection buckles to connect the seats together (or not, it's totally up to users).

